

Launch area	Individual launch Gridlines E 8550 or S 1550	Sunrise/Sunset	05:48 / 20:05
Launch period	17:45 - 19:00	Min. ILP → all goals	-
PZs in force	all active, blue PZ 1 - 5500 ft MSL	Next briefing	05:00
Solo flight	not required	QNH	1021

Task	<b>15 MDD Minimum Distance Double Drop (Rule 15.15)</b>	Task order	in order
a. Description of scoring area(s)	see sketch on the backside Triangles Areas A, Loggermarker #1 Circle Intersection Area B, Loggermarker #2		
Scoring period	ends at 2000	MMA	
Scoring area	Scoring Areas	Marker color	
		Marker drop	
		Loggermarker	1, 2

Task	<b>16 XDD Maximum Distance Double Drop (Rule 15.18)</b>	Task order	in any order
a. Description of scoring area(s)	see sketch on the backside Area A: Circle Intersection of Task 15, Loggermarker #3 Area B: ONLY GRASS valid, Marker drop or Area B: Loggermarker 4, before Line <b><u>W-E 2427</u></b> The best B Mark is used		
Scoring period	ends at 2000	MMA	see above
Scoring area	Scoring Areas	Marker color	yellow
		Marker drop	free
		Loggermarker	3, 4

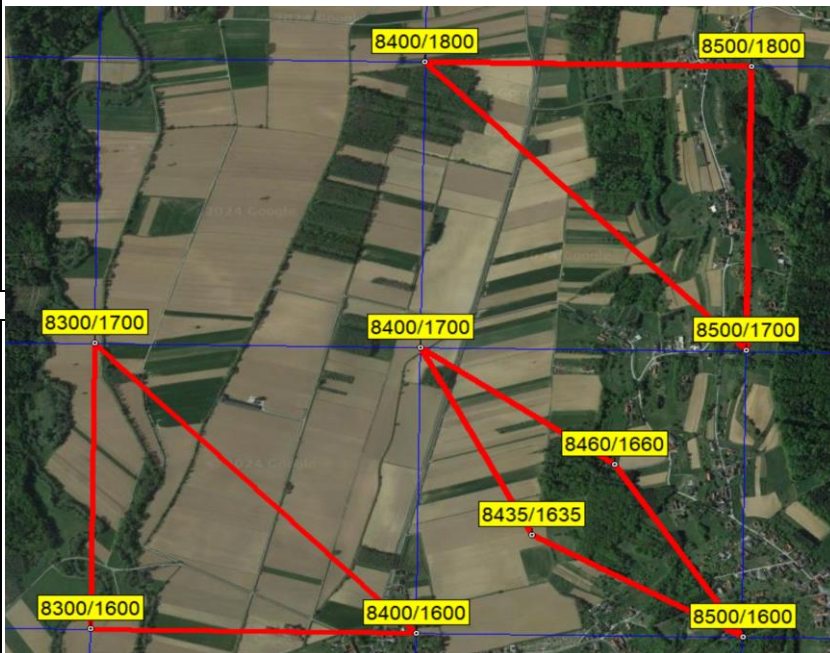
Task	<b>17 JDG Judge Declared Goal (Rule 15.2)</b>	Task order	in any order
a. Position of set goal/target	7688 / 2434 - 928ft		
Scoring period	ends at 2000	MMA	green field
Scoring area	entire contest area	Marker color	white
		Marker drop	free
		Loggermarker	5

Task	<b>18 WSD Watership Down (Rule 15.7)</b>	Task order	in any order
a. Description of hare balloon	Bad Waltersdorf Balloon blue		
b. Location of the launch point of the hare balloon	7688 / 2434 - 928ft		
c. Set take-off time of the hare balloon	18:30		
d. Intended flight duration of the hare balloon	30-45 min (depends on Landing field)		
Scoring period	ends at 2000	MMA	R30m
Scoring area	entire contest area	Marker color	orange
		Marker drop	gravity
		Loggermarker	6

Task	<b>19 FON Fly On (Rule 15.5)</b>	Task order	in order
	a. Method of declaration	in loggergoal #1, max. 2 valid declarations, Declaration only possible inside a Radius of 2km 7588/2529	
	b. Number of goals permitted	1	
	c. Goals available for declaration	any coordinate (no goal number) with altitude: goal altitude must be at least 500ft higher or lower than declaration point	
	d. Minimum and maximum distances between declaration point and declared goal	2km / 4km	
	f. minimum and maximum distances of declared goal(s) from any goal set by the director	2km / 4km	
Scoring period	ends at 2000	MMA	
Scoring area	entire contest area	Marker color	
		Marker drop	
		Loggermarker	7

Task	<b>20 FON Fly On (Rule 15.5)</b>	Task order	in any order
	a. Method of declaration	in loggergoal #2, max. 2 valid declarations	
	b. Number of goals permitted	1	
	c. Goals available for declaration	any coordinate (no goal number) with altitude (above 1000ft): goal altitude must be at least 500ft higher or lower than declaration point	
	d. Minimum and maximum distances between declaration point and declared goal	minimum 2km	
	f. minimum and maximum distances of declared goal(s) from any goal set by the director	minimum 2km	
Scoring period	ends at 2000	MMA	
Scoring area	entire contest area	Marker color	
		Marker drop	
		Loggermarker	8

Task 15 Areas A




---



---

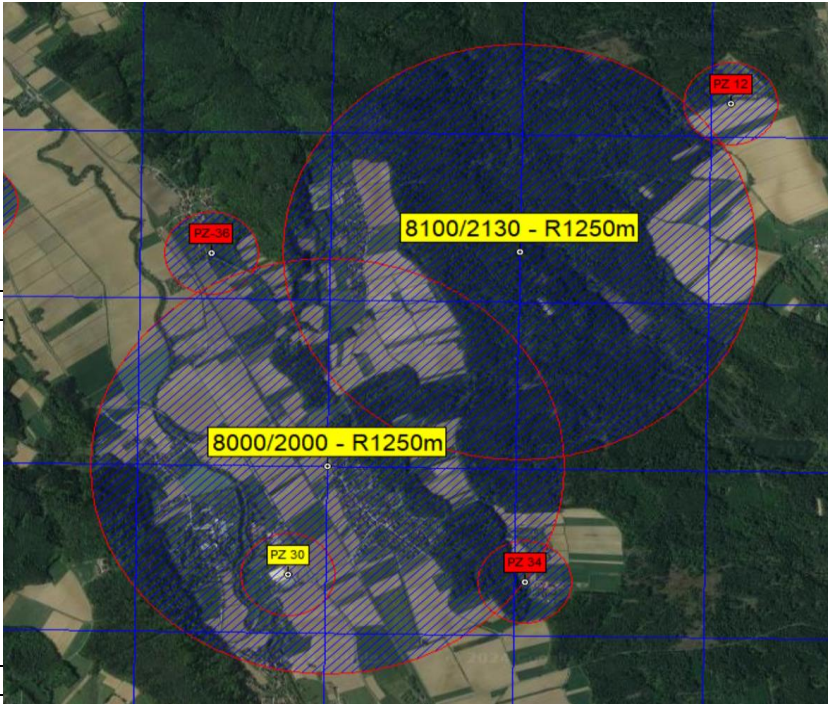


---



---

Task 15 Area B and Task 16 Area A



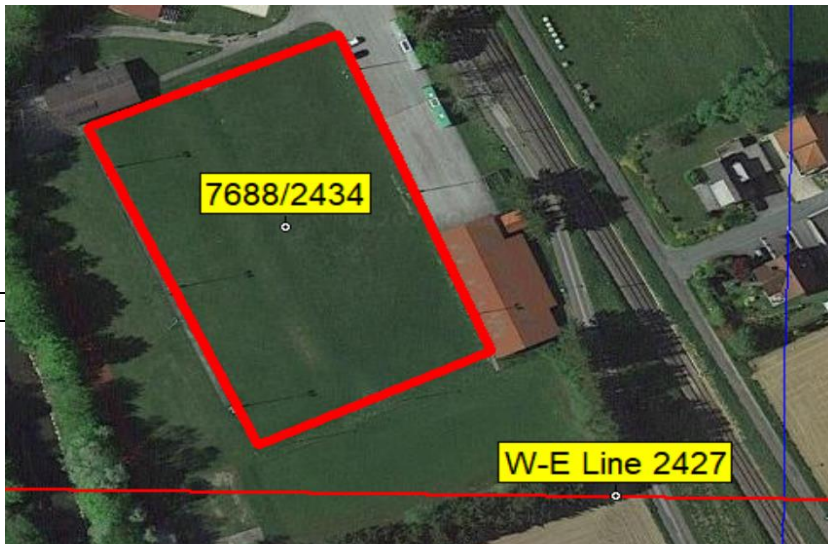
---

---

---

---

Task 16 Area B



---

---

---

---

Task 18



---

---

---